

RESTAURIERUNG_{am}G



REFERENCE

Breitenfeldt · Hamann · Lucker

Cuvrystraße 1 · 10997 Berlin/Germany · Telephone: + 49(30)61 286 280 · Fax: + 49(30)61 286 290
Internet: www.restaurierung-am-oberbaum.de · eMail: info@restaurierung-am-oberbaum.de

Our Team

Restaurierung am Oberbaum was established to carry out restoration projects within Germany and abroad. We are active both in the preservation of historical monuments and in the restoration of artefacts in museums and archaeological finds.

Our team comprises:

- graduates in restoration
- restorers
- sculptors
- architects
- art historians
- archaeologists
- scientists

We are able to provide specialists in architectural paintwork on, mural painting, sculpture, the drafting of plans and surveys, documentation, photography and project planning and in ceramics, stone, stucco work and plaster.

*Contact: RESTAURIERUNG AM OBERBAUM
Breitenfeldt • Hamann • Lucker
Cuvrystrasse 1
10997 Berlin/Germany*

*Telephone: +49 (30) 61 286 280
Fax: +49 (30) 61 286 290
E-mail: info@restaurierung-am-oberbaum.de
Internet: www.restaurierung-am-oberbaum.de*

Competence based on practical experience

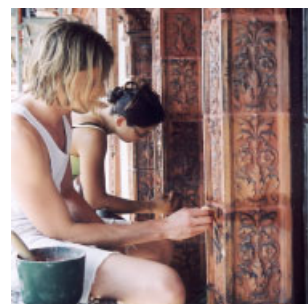
Planning, co-ordination and monitoring of restoration projects are important components of our service spectrum.

Our work is founded on many years of experience of successfully completing restoration projects for the preservation of historic buildings and the restoration of artefacts in museums. Starting with the preliminary planning phase, we provide the following services for our customers:

- We determine the extent of the services required and co-ordinate the programme for the entire project right up to agreement on the aims of the restoration.
- We integrate the services of other specialist planners and produce drafts, sample work and models.
- We draw up time and organisational plans and estimate the building costs based on our own practical experience.

The pooling of diverse specialist competencies and interdisciplinary, team-orientated collaboration has proved itself as an essential component of our company philosophy. Our planning team comprises graduates in restoration, sculptors, architects, scientists, art historians and archaeologists. The planning, which begins with a survey of the current state of the object and research into its history, comes from a single source. Our services include among other things:

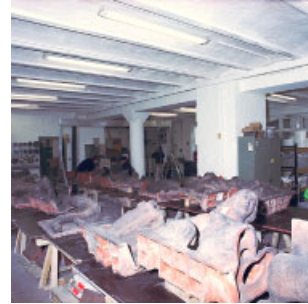
- The drawing up of plans showing the current status, inventories and room equipment catalogues with detailed object descriptions



- The determination of the object's dimensions and deformations and the provision of a photographic record, research of historical sources and in archives and the investigation of the history of individual objects
- The evaluation of historical photographs, visualisation of historical or planned statuses and the drawing up of plans showing the current or reconstructed status.

This smoothly working team, with its practical experience, is the guarantee of highly reliable plans. In collaboration with long-term established business partners operating in related fields, projects posing complex problems are undertaken in-house with commitment and care.

- Systematic analysis and evaluation of the object status before work is started, the analysis of the origin of the damage and the drawing up of a prognosis of how the damage is likely to progress form the guidelines for all subsequent planning stages up to the completion of the draft describing the measures required.
- This includes the investigation of the current status, the identification of the materials and detemination of all the relevant characteristic material values.
- Investigations concerning stability and the foundations are carried out in collaboration with recognised specialist offices.
- The results are documented for each of the specialist areas in an assessment summary which includes visualisation of the results in the form of plans showing damage, materials and the current status.



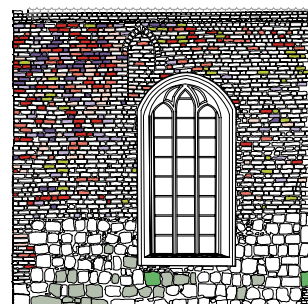
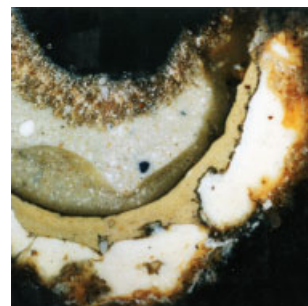
Reliability through technical innovation

Our tried and tested office organisation with personally responsible project managers and unambiguous job allocation, allows us to carry out our projects consistently and expertly.

- Based on the analysis of the object status and the preliminary plan, the realisation plan is developed, samples are provided, tests are carried out and service specifications written.
- Restoration materials and techniques for the specific conservation and museum requirements are investigated and discussed until they are ready to be deployed, sample and test areas are evaluated to form the basis of reliable plans and cost estimates.

The modern equipment in our planning office, the utilisation of in-house databases, our specialist library and research projects in collaboration with scientific institutions form an important foundation for our productivity.

- A basic feature of all the planning steps is the parallel development and utilisation of practical project or object databases and the communication of planning targets through visualisation.



Performance through a range of specialists

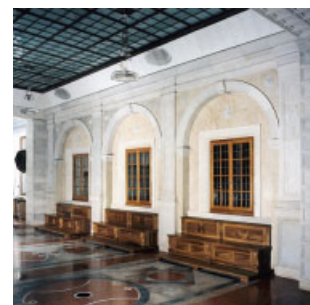
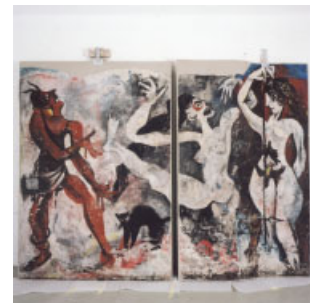
The most important pillar of our specialist restoration site management is the practical experience we have gained carrying out our own restoration projects. For specific requirements and problems, innovative solutions can be developed rapidly and without complication through the many complementary qualifications within the team.

- The supervision of the project realisation and the setting up of time plans based on our experience with previous projects leads to reliable plans and cost estimates.
- The cost controlling is executed taking restoration detail into account, the quality is guaranteed through an approval procedure carried out by our building experts.
- Our activities in the fields of restoration planning and site management are performed making use of many opportunities for in-house feedback.

We develop restoration materials and techniques for conservation and museum projects and check existing materials for their suitability for the specific application. Here research and our own applications mutually benefit each other.

The integration of our laboratory in the planning and co-ordination process ensures that reliable and sensible solutions are found for the determination of scientific parameters, material characteristics, the analysis of contaminants, salt or climate measurements etc.

- We research a wide range of materials and art techniques and determine reliable and innovative methods for conservation, restoration and reconstruction in specialist non-standardised projects.



The determination of environmental influences and the measurement of contaminants and the local climate with regard to the creation of an appropriate environment for storing historical artifacts in museums or buildings to be conserved is an integral part of our range of services.

- This service includes among other things: the writing of maintenance and care instructions, the creation of databases and object files for the administration and monitoring of the status, the monitoring of maintenance and care services, the organisation of the care and finally the verification of the effectiveness of the plans and measures.



Service overview

Project planning:

- Planning and co-ordination of complex projects in the conservation of historic buildings in collaboration with scientific laboratories, institutes and other specialist planners
- Plans, specifications and service catalogues for the restoration of listed buildings and objects
- Restoration monitoring of building projects

Investigation of the current status and research on the history of buildings:

- Investigation of the paint history of buildings and objects
- Research / archive research on the development of historic buildings
- Investigation into the history of individual objects
- Writing of room equipment catalogues, plans showing the current status and reconstruction plans
- Writing of physical building assessments

Documentation:

- Computer-aided mapping, documentation, presentation and database applications
- Photography, stereo photography and digital image processing as part of the documentation
- Creation of databases which are useful for practical applications

In-house research:

- Research concerning various materials and artistic techniques
- Development of reliable methods for conservation, restoration and reconstruction for specific and non-standard projects

Interdisciplinary collaboration:

- Collaboration with architects, curators of monuments, archaeologists, art historians, scientists and skilled building workers

Training:

- We offer practical work experience / voluntary work lasting one to three years in our restoration workshop.

Practical restoration

Conservation and restoration of:

- Murals and paint design on buildings
- Sculptures and sculpted ornamentation for buildings made from stone, stucco, ceramics or artificial stone
- Design for spaces and facades made from natural or artificial stone, stucco or ceramics

Reconstruction and creation of new objects:

- Reconstruction of lost or destroyed artefacts and the appearance of spaces and facades in accordance with historical information and research on the project
- New creation of sculptures and ornamentation for buildings in the case of complete loss - from design to the object itself - made from stone, stucco, bronze, ceramics, artificial stone etc.